

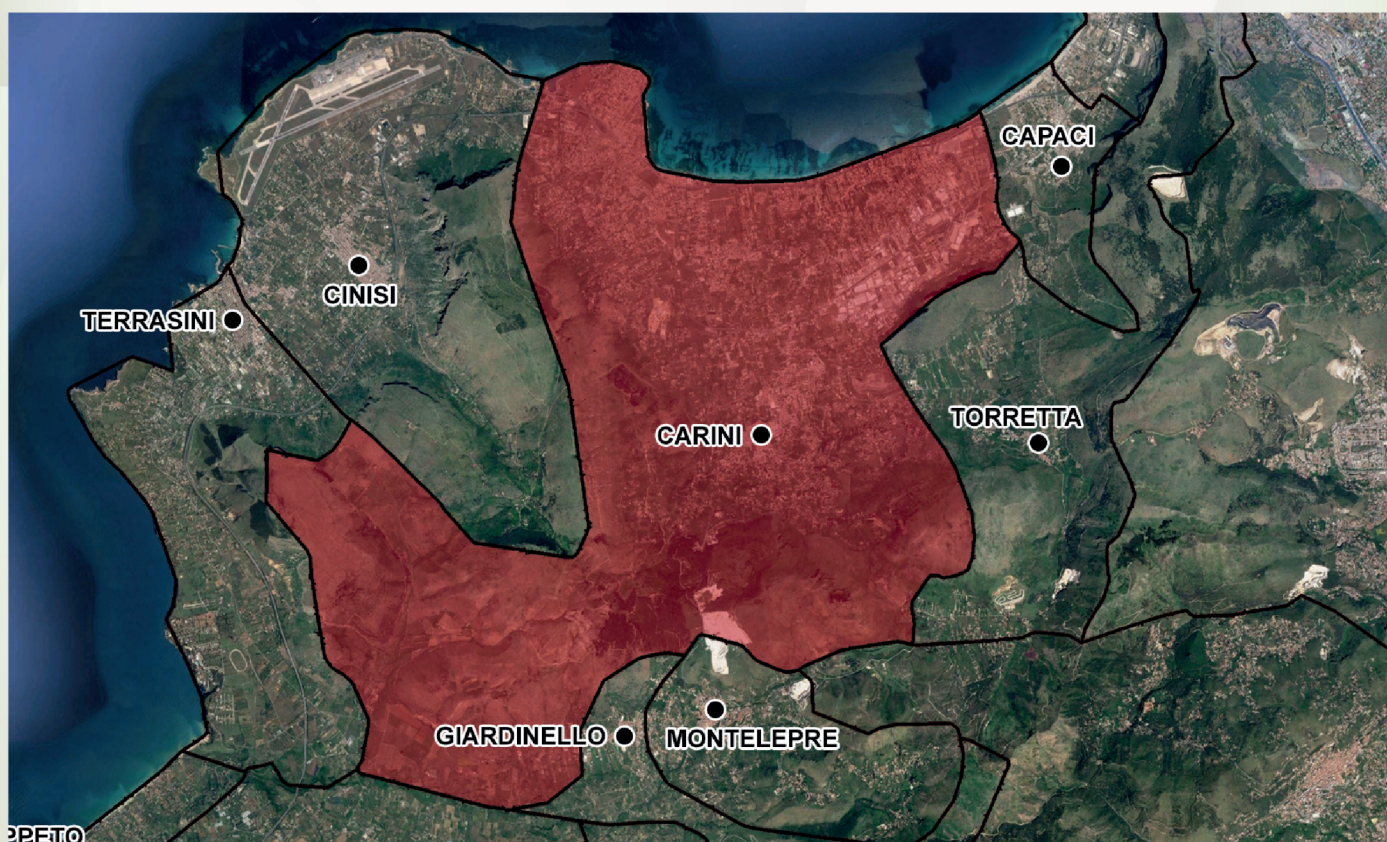
PROGETTO PER LA RACCOLTA E CONFERIMENTO RIFIUTI SOLIDI URBANI E FRAZIONI DIFFERENZIATE NONCHE' DI ALTRI SERVIZI DI IGIENE URBANA PER N°12 COMUNI.

Comuni interessati: Altofonte, Balestrate, Carini, Cinisi, Ficarazzi, Giardinello, Isola delle Femmine, Montelepre, Terrasini, Torretta, Trappeto, Villabate.

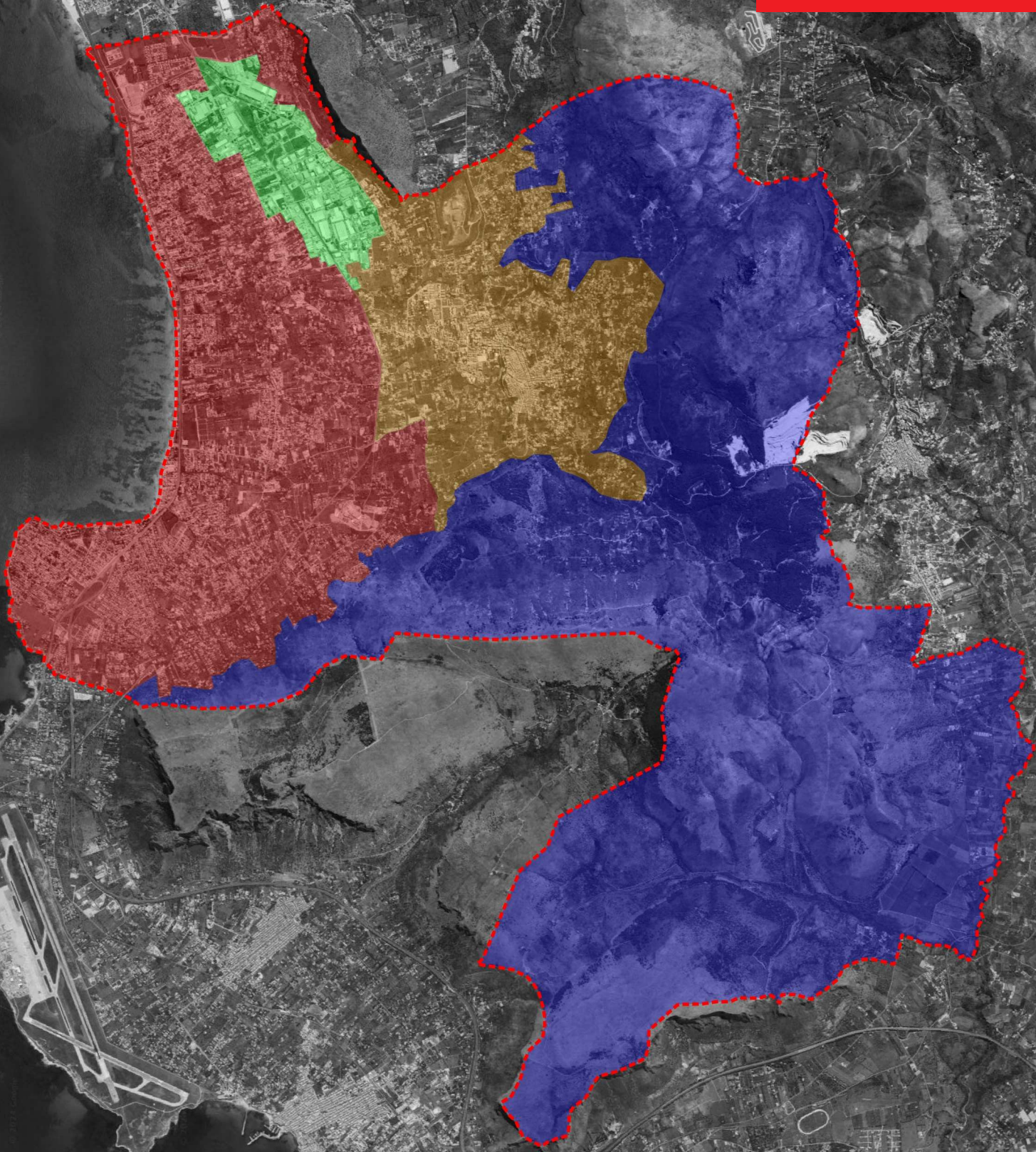
COMUNE DI CARINI








Allegato 1 Carini: Inquadramento Territoriale



R.U.P.: Arch. Leonardo Tola



LEGENDA

-  Limite Comunale
-  Area Urbana
-  Area Periferica
-  Area Esterna
-  Area Industriale

